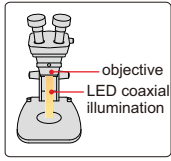


# DIGITAL ZOOM MICROSCOPE CODE ISM-ZS60



coaxial illumination



LED ring light(optional)

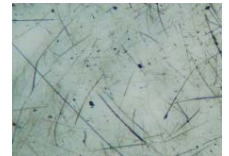


computer is not included

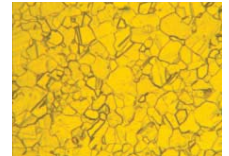


COAXIAL ILLUMINATION

MEASUREMENT (ON COMPUTER)



observe the scratches or points on smooth surfaces



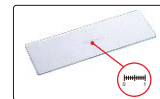
observe the metallurgical structure

## SPECIFICATION

Magnification	38X~230X (on 19" monitor)
Pixel	5M
Sensor	1/2.5" CMOS
Resolution	picture 2592×1944, 1920×1080, 1600×1200, 1280×960, 1280×720, 1024×768, 800×600, 640×480
	video 1920×1080, 1600×1200, 1280×960, 1280×720, 1024×768, 800×600, 640×480
Max. workpiece height	215mm
Illumination	LED coaxial illumination
Output	USB
Power supply	5V, >500mA
Dimension (L×W×H)	290×260×480mm
Weight	5.1kg



plastic calibration rule (included, graduation 1mm)



glass calibration rule (included, graduation 0.1mm)



10X objective (included)



software CD (included)

## STANDARD DELIVERY

Main unit	1pc
Digital camera	1pc
LED illumination	1pc
10X objective	2pcs
Glass calibration rule (graduation 0.1mm)	1pc
Plastic calibration rule (graduation 1mm)	1pc
Software CD	1pc
Anti-dust cover	1pc

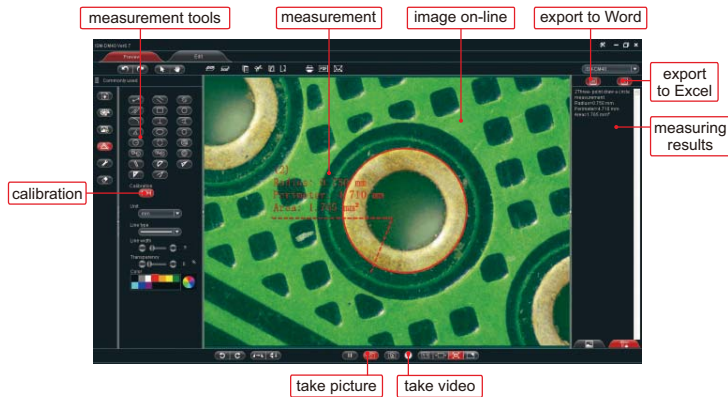
## OPTIONAL ACCESSORY

LED ring light	ISM-ZS-RL
----------------	-----------

## OBJECTIVE SCALE, MAGNIFICATION, VIEW FIELD AND FOCUS DISTANCE

Objective scale	Magnification (on 19" monitor)	View filed	Focus distance
0.8X	38X	7×5mm	130mm
1X	46X	5.5×4.1mm	125mm
2X	92X	2.7×2mm	118mm
3X	144X	1.8×1.3mm	116mm
4X	184X	1.3×1mm	115mm
5X	230X	1.1×0.8mm	114mm

## SOFTWARE FOR COMPUTER



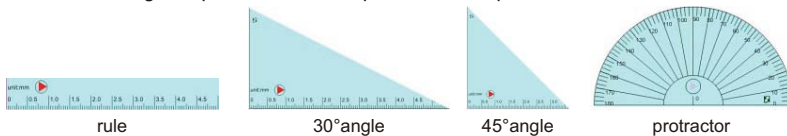
- Language: Chinese, English, Japanese, German, French
- Operation system: Windows XP/7/8/10

### Measurement tools:

- measure length of continuous line
- measure length of line or distance between two points
- measure radius, length and angle of arc
- measure distance between two parallel lines
- measure angle with three points
- measure length, width, girth and area of rectangle
- measure distance between two circles
- measure center distance between parallel lines
- measure distance between point and line
- measure axis lengths, girth and area of ellipse
- measure angle with two lines
- measure circumference and area of polygon
- measure radius, girth and area of circle

### Comparison tools:

Create rule, angle or protractor, to compare with workpieces.



### Data export to Word or Excel:

